



TOOLS AND MATERIALS WHAT YOU NEED TO INSTALL

- Hawk and trowel
- Pencil
- Hammer drill
- Level
- Corn which brush
- Tarp
- Premix mortar
- Utility knife
- Mortar mixer
- Pointing tool
- 1/4" trowel
- Measuring tape
- Damp rag
- 5 gallon bucket
- Mortar bag
- Ceramic tile adhesive

3 Bricks Wide

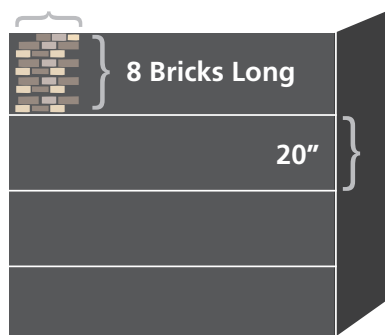


Diagram 1

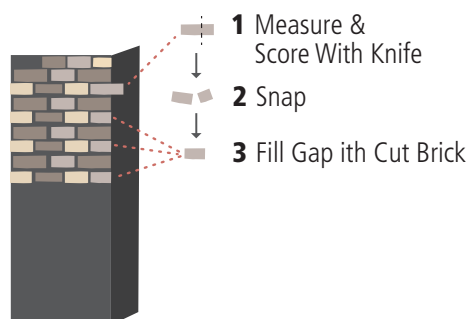


Diagram 2

APPLICATION | Wall and Brick preparation Preparing the Wall

Measure the wall that you are covering in brick. Measure the surface starting from the top of the wall to the bottom of the wall, marking every 20". Measure on both ends so you are then able to draw horizontal guide lines across the wall using the level

(diagram 1)

Using the utility knife cut the access mesh off of the brick panels allowing them to puzzle together.

Steps to Applying the Brick to Wall

Note : Start by applying glue to the corner bricks first if applicable to your job. Then work your way from the corners with the full panels.

Single bricks can be purchased and used in areas where needed without having to cut bricks from full sheets (i.e. wall ends, around wall outlets etc.)

Step 1 : Apply adhesive onto the wall using your trowel and hawk

Step 2 : Spread the adhesive evenly over the wall using the towel, stay within the guide lines drawn, spreading within only one column at a time and apply only enough to cover two or three panels, be sure not to cover your horizontal reference lines with adhesive so they are still visible.

Step 3 : Lay panels on adhesive and press against the wall. With a knife score the mortar joints so you are able to adjust the panel and bricks to get the appropriate spaces wanted. *(The Glue's dry time may vary once applied to the wall, giving approximately 10 - 15 minutes of workable time.)*

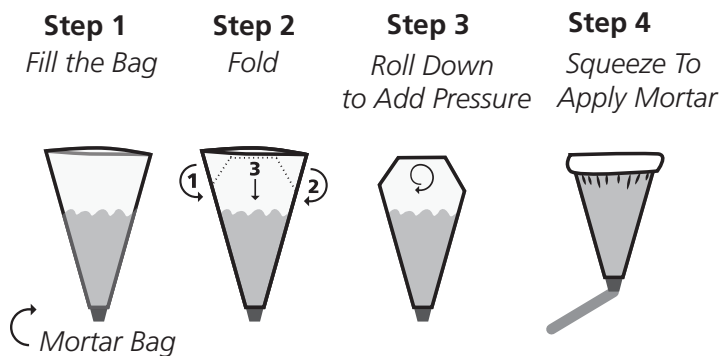
Step 4 : If any excess glue gets on to the brick, it must be removed immediately. Use a damp rag or cloth to remove it. This can damage the brick so do not let it dry on its surface!

Step 5 : To fill in the panel where small half bricks are needed, you must measure and cut the brick. First, overlap one single brick piece on top of an already applied brick, this will help you to reference and score where the brick needs to be cut. *(diagram 2)* Follow by measuring the length needed to fill gap on the brick. Score on the backside of the brick with a utility knife a few times and then snap the brick to the size needed. Then, glue the cut singlet into the gap. Let the adhesive set and dry for 30 minutes before mortaring

MORTAR GUIDE | Preparing and Applying

Preparing the Mortar

Start by filling a 5 gallon bucket with 1/3 water and 1/3 pre-mixed mortar. Then mix the pre-mix and water with hammer drill and mortar mixer, and continue to add mortar to the mix until its consistency is that of pudding / yogurt. *Mix for a minimum of 4 minutes
Cut approximately 1/2" off the tip of the mortar bag.
Using a plastic ladle fill half of the plastic mortar bag. Fold the end of the mortar bag to keep pressure within the bag. (Diagram 3)



Applying the Mortar

Step 1: Apply mortar between the joints; by folding the bag correctly you will be able to squeeze the end of the bag allowing pressure to help push mortar out of the bag, similar to a tube of toothpaste.

Note: If the mixture is too runny and watery add more mortar to the bucket and mix, if the mortar is too thick then add water to the bucket and mix again.

Step 2: Let the mortar set for approximately 30 minutes until it has reached a stiff, firm and solid state

Step 3: Begin tooling in to the mortar joints with the pointing tool

Step 4: Let wall set for an hour until it is dry and brush all access mortar off of the wall with a brush.

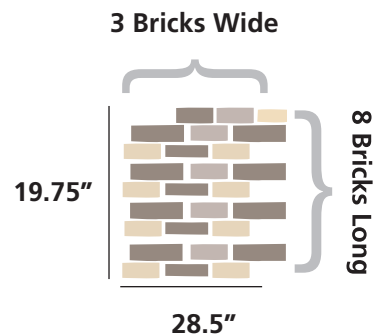
Step 5: (optional) A water based brick sealer can be used to help seal brick if it is will be exposed to moisture.

SHEET SPECIFICATIONS | SHEETS AND SINGLE BRICKS

Sheets;

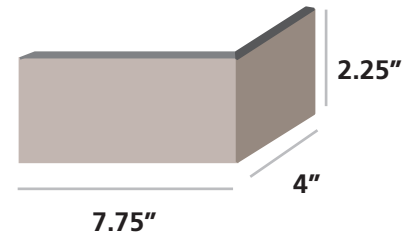
- Height 19.75"
- Length 28.5"
- Covers 3.50 Sq ft per sheet
- 7 sheets per box
- bricks are 1/4" to 3/8" in thickness

(Diagram 4)



BOX MEASUREMENTS:
10.25"W x 29.5L x 4.5"H

CORNER SPECIFICATIONS:
4"W x 7.75"L x 2.25"H
(Diagram 5)



SINGLE BRICK SPECIFICATIONS:

Our bricks are cast from a variation of brick faces to give it an authentic look so sizes of individual bricks vary from 7.65/8" L x 2/2.25"W

Soho bricks contain no toxins or VOC's and have a flame spread index and fire rating of "A"!

